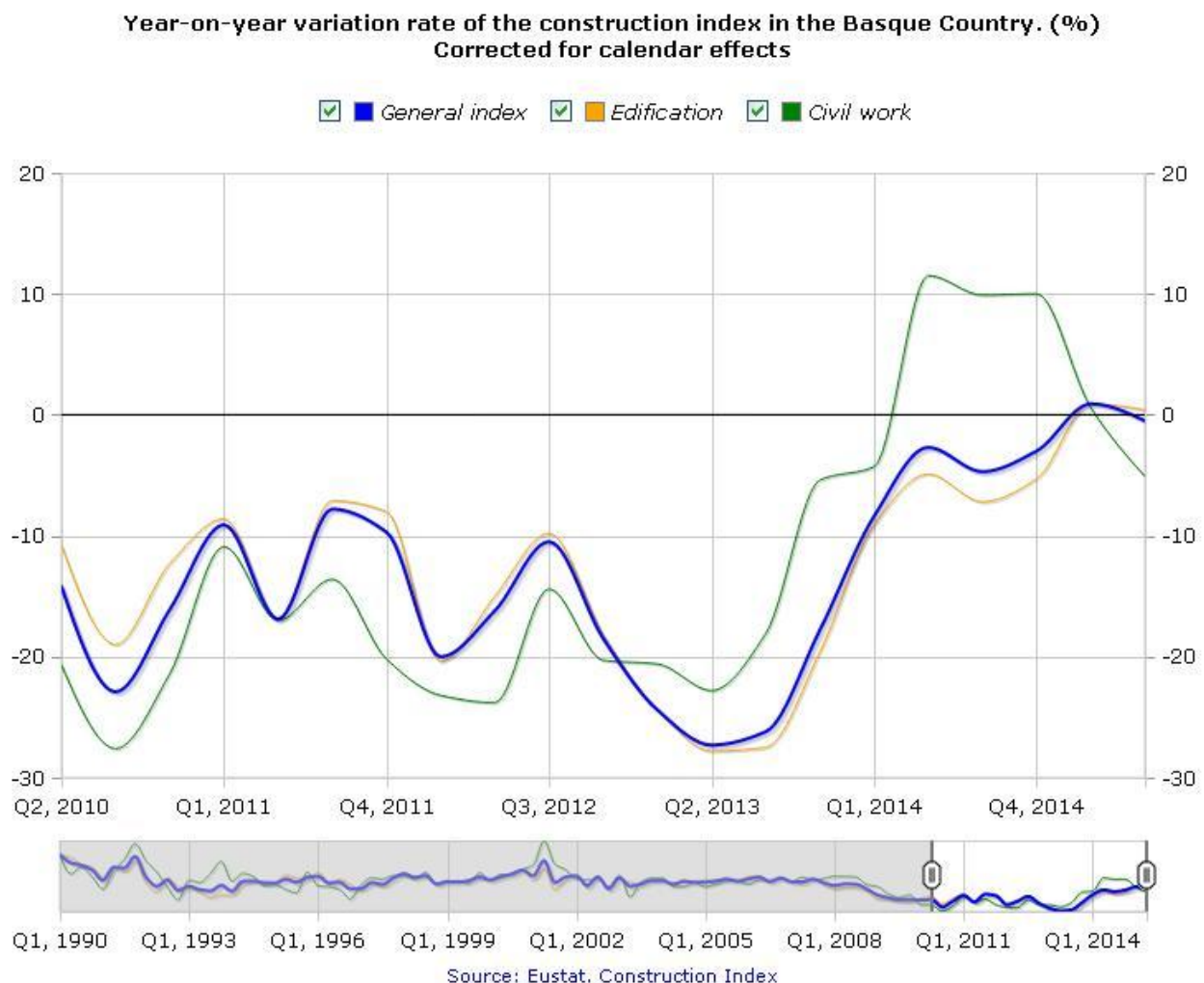


The Construction sector in the Basque Country rose by 0.2% in the first six months of 2015

Building registered an increase of 0.6%, whereas Civil Works contracted by 2.5%

The construction balance in the Basque Country registered a year-on-year nominal upturn of 0.2% in the first six months of 2015, in homogeneous terms of the working calendar, according to EUSTAT data. The quarterly trend was reversed; whereas in the first quarter nominal growth was 0.8%, the second saw a decrease of 0.5%.



In the second quarter of 2015, once seasonal effects were corrected, the Construction sector decreased by 1.3% on the first quarter of 2015.

The decline in the Construction sector in this second quarter was due to the negative performance of the Civil Works subsector, which registered a year-on-year downturn of 5.1%, since the Building subsector posted a rise of 0.4%.

In quarter-on-quarter terms, if the activity of the sector in the second quarter of 2015 is compared to the previous quarter, both subsectors saw a negative evolution of 1.3% in Building and 1.4% Civil Works.

Employment in the Construction sector experienced a decrease of 1.2% in the second quarter of 2015 compared to the first quarter of 2015.

Table 1: Construction index, Basque Country. Variation Rates (%). II/2015

	Corrected		Deseasonalised	
	II 15/II 14	At/At-1 (1)	II 15/I 15	I 15/IV 14
Production Index	-0,5	0,2	-1,3	0,9
Building	0,4	0,6	-1,3	2,6
Public works	-5,1	-2,5	-1,4	-7,5
Indices of employed personnel	-	-	-1,2	-0,4

(1) Year on year variation rate of the accumulated period from the first quarter to the last quarter of year t compared to the same period of the year t-1

Source: Eustat. Construction Index

For further information:

Eustat - Euskal Estatistika Erakundea / Instituto Vasco de Estadística

C/ Donostia-San Sebastián, 1 01010 Vitoria-Gasteiz

Press Service: servicioprensa@eustat.eus Tlf: 945 01 75 62

Further press releases on Construction index of the Basque Country (ICC)

Database on Construction index of the Basque Country (ICC)